

NO MORE KNIVES

LESSON PLAN



Christina
GABBITAS

Illustrated by
Evie
HURST



The No More Knives animation shows a story about a group of friends who are groomed into county lines and realise the consequences of carrying knives.

Film Running Time

12 Minutes

Advised Session Duration

20 to 25 Minutes

Age

Rating 10+

Film Link

<https://youtu.be/wXNVQ4VcBts>
or search 'No More Knives' on YouTube

Suggested Follow-up Materials

Visit www.notinourcommunity.org and select the 'NIOC Connect' tab for more resources. Follow Not in our community on Instagram, Facebook, Twitter, or YouTube

Closing Message & Accessing Help

Exploitation is never your fault. If someone is in immediate danger call 999. If you have concerns about exploitation, you can call the local police on 101.

If you want to anonymously discuss concerns about grooming, sexual or criminal exploitation you can speak to Crimestoppers on 0800 555 111 or Childline on 0800 1111 or online.

For more information visit

www.nomoreknifecrime.co.uk.

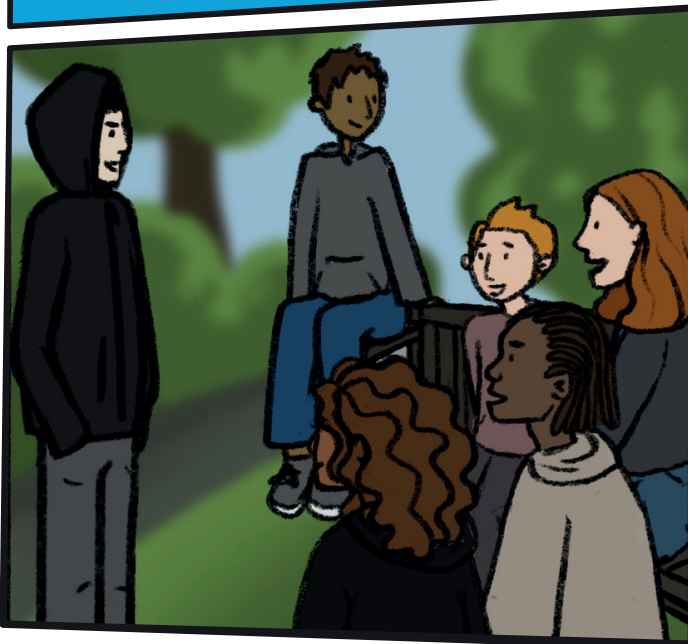
Alternatively, you could speak with a trusted adult such as a parent, grandparent, carer, teacher, youth, health or social worker, and you can use www.notinourcommunity.org to work out the next steps to take together.

There are also local organisations here to help you listed on the "Get help" section of the website.

NO MORE KNIVES



1. Watch the film.
2. Read the questions and talk through / write answers.
3. Take the No More Knives true or false quiz.
4. Use the suggested answers / hints section if required.
5. Familiarise yourself with the signs and how to get help



QUESTIONS

1. What do you think about what happened in the story?
 - How does it make you feel?
2. Why do you think the children agreed to get involved?
 - Do you think they were aware of the consequences?
3. Why do you think Steve, an older man, chose to recruit children to move drugs for him?
4. What would you do if someone asked you deal or move drugs in exchange for a lot of money?

Suggested answers and prompts for each question are included on the following pages.



QUESTIONS WITH HINTS AND ANSWERS

2. Why do you think the children agreed to get involved?

Suggested answers:

- They trusted Steve who was friendly and kind to them.
- They wanted to make some money.
- They thought it would be safe and easy.
- They went along with it because their friends were involved too.
- They were excited.

3. Why do you think Steve chose to recruit children to move drugs for him?

Suggested answers:

- So that if they were arrested or got into trouble he was no directly involved.
- So that someone else had to take the risks.
- Because he thought that the children would not be noticed by the police.
- They are a cheap way of him dealing drugs.

4. What would you do if someone asked you deal or move drugs in exchange for a lot of money?

Suggested answers:

- This could be answered in many different ways, including humourously, however it is possible that some young people are undeterred by the opportunity which could be a safeguarding concen and require further dedicated learning.
- NIOC Interact has programmes of learning for young people going into greater detail of child criminal exploitation that can be tracked by teachers or youth workers. See www.notinourcommunity.org



TRUE OR FALSE QUIZ

1 TRUE OR FALSE?

Anything that could be used to harm another person, such as a sharpened comb or pen is legally classed as an offensive weapon and is illegal to carry with you.



???

2 TRUE OR FALSE?

Being found carrying a knife can lead to a prison sentence of up to 4 years even if it is not used.

???

4 TRUE OR FALSE?

If you stab somebody and they die, you may face a life sentence in prison.



???

3 TRUE OR FALSE?

Protecting yourself is a reasonable excuse for carrying an offensive weapon, such as a knife.

???

7 TRUE OR FALSE?

If you are with a friend who uses an offensive weapon to injure or kill someone you could also be sent to prison for murder or attempted murder.

???

5 TRUE OR FALSE?

It's illegal for shops to sell knives to anyone under 18 and buying a knife under the age of 18 is an offence.



???

6 TRUE OR FALSE?

99% of young people aged 10-29 don't carry a knife.



???

9 TRUE OR FALSE?

Only people involved in gangs get stabbed.



???

8 TRUE OR FALSE?

People can only die if they are stabbed in the heart.



???

10 TRUE OR FALSE?

Carrying a knife makes you safer from being attacked



???

11 TRUE OR FALSE?

Having a criminal record can prevent you from getting some types of jobs, going to college and university, and travelling to some countries.



???

TOTAL SCORE
/11

TRUE OR FALSE QUIZ

1 TRUE OR FALSE?

Anything that could be used to harm another person, such as a sharpened comb or pen is legally classed as an offensive weapon and is illegal to carry with you.

It's also illegal to carry a 'disguised knife' - anything with a concealed blade or sharp point that's made to look like an everyday object (like a pen, cigarette lighter or lipstick).

TRUE

2 TRUE OR FALSE?

Being found carrying a knife can lead to a prison sentence of up to 4 years even if it is not used.

TRUE

3 TRUE OR FALSE?

Protecting yourself is a reasonable excuse for carrying an offensive weapon, such as a knife.

FALSE

4 TRUE OR FALSE?

If you stab somebody and they die, you may face a life sentence in prison.

TRUE

7 TRUE OR FALSE?

If you are with a friend who uses an offensive weapon to injure or kill someone you could also be sent to prison for murder or attempted murder.

TRUE

5 TRUE OR FALSE?

It's illegal for shops to sell knives to anyone under 18 and buying a knife under the age of 18 is an offence.

This includes kitchen knives and even cutlery.

TRUE

6 TRUE OR FALSE?

99% of young people aged 10-29 don't carry a knife.

It is rare, so you shouldn't feel like everyone is a risk to you.

TRUE

9 TRUE OR FALSE?

Only people involved in gangs get stabbed.

FALSE

8 TRUE OR FALSE?

People can only die if they are stabbed in the heart.

There is no 'safe place' to stab someone. Get stabbed in the heart and you can lose all of your blood in one minute. But a wound in the arm or the leg can still kill and young people have died from wounds to the leg because an artery was severed.

FALSE

10 TRUE OR FALSE?

Carrying a knife makes you safer from being attacked

Police estimate that by carrying a knife, you are much more likely to get stabbed yourself as situations involving weapons can quickly get out of control.

FALSE

Knife crime can affect anyone, not just people in gangs. Innocent bystanders can get caught in the middle of other people's disputes and suffer trauma, serious injuries or worse.

11 TRUE OR FALSE?

Having a criminal record can prevent you from getting some types of jobs, going to college and university, and travelling to some countries.

Your criminal record is permanent and checks can be made from which potential employers, colleges or universities might withdraw an offer.

Countries such as the USA and Canada may not allow someone with a criminal record in, even if it is just for holiday.

TRUE